

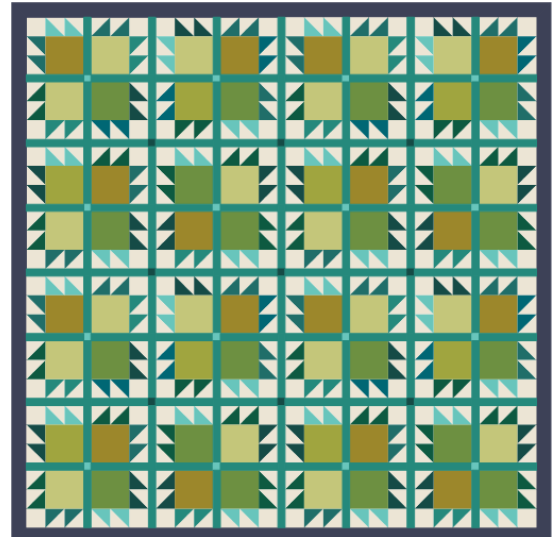
Bear Paw Workshop: Building the Blocks

Sashing Set 1 & Cornerstones

Pro-Tips:

- Read through all instructions before beginning.
- Seam Allowance= 1/4"

Note: Measurements and exact instructions are based the Classic Layout.. Adjust according to selected Layout.



Classic Layout

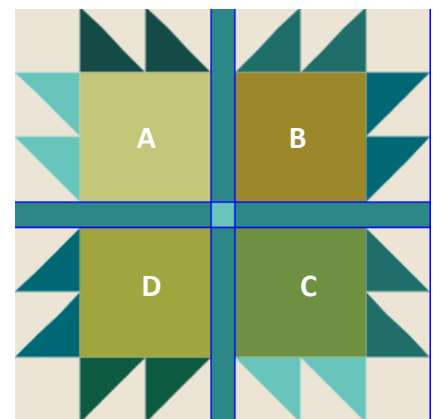
Four Paw Unit Assembly

- Press each Paw & trim any loose threads.
- Paws should measure 6.5" x 6.5". If they are consistently another size, adjust sashing length to the measurement of the Paws.

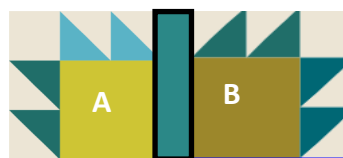
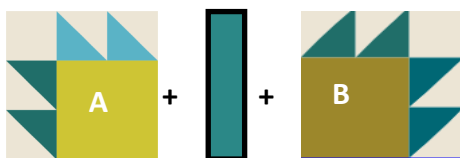
For 1" FINISHED sashing and cornerstones:

- Sashing strips Cut (64) 1 1/2" x 6 1/2"
- Corner Stones Cut (16) 1 1/2" x 1 1/2"

- Stitch a sashing strip between each Paw A & Paw B.
- Press seams toward the sashing strip.
- Make 16: 6 1/2" x 13 1/2"



13" FINISHED Sashed Unit

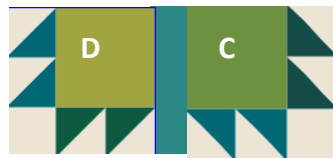
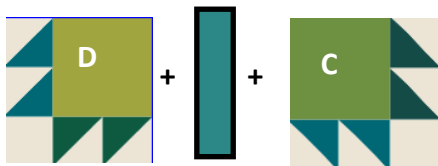


Make 16
6 1/2" x 13 1/2"



Quilt Along with QUILTERS SELECT®

- Stitch a sashing strip between each Paw D & Paw C.
- Press seams toward the sashing strip.
- Make 16: 6 1/2" x 13 1/2"



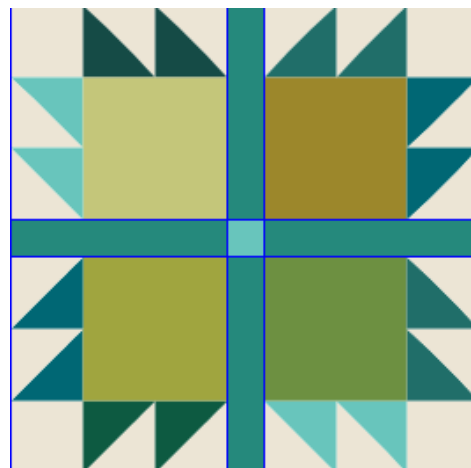
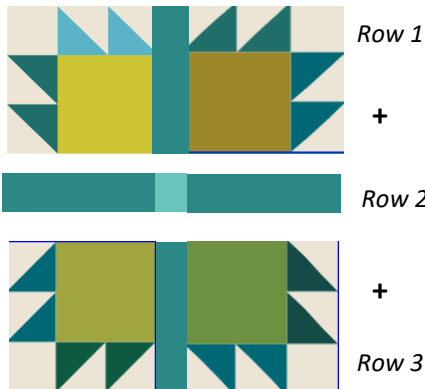
Make 16
6 1/2" x 13 1/2"

- Center sashing: Stitch a Sashing Strip + Corner Stone+ Sashing Strip
- Make 16. Each joined strip should measure 1 1/2" x 13 1/2".
- Press seams towards sashing strip.



Make 16
1 1/2" x 13 1/2"

- Join Rows 1 + 2 + 3.
- Press well.



Make 16
13 1/2" x 13 1/2"



QUILTERSSELECT.COM

Pattern design and layout powered by

