

Quilt Along with QUILTERS SELECT®

Bear Paw Workshop: Putting it Together

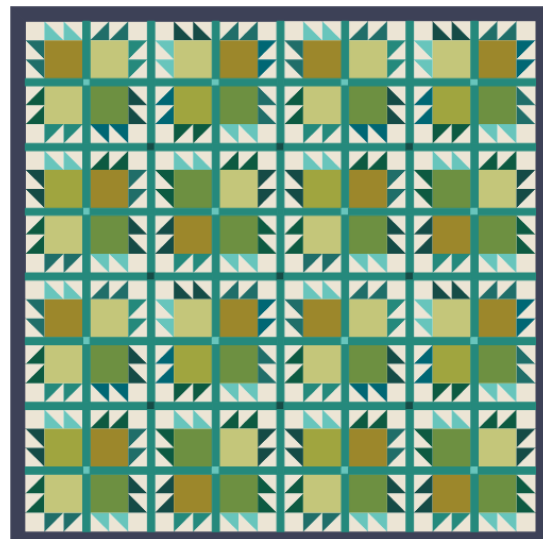
Sashing & Assembly

Pro-Tips:

- Read through all instructions before beginning.
- Seam Allowance= 1/4"

Note: Measurements and exact instructions are based the Classic Layout.. Adjust according to selected Layout.

- To make the final assembly as seamless as possible, give each block a good press. Blocks should measure 13 1/2" prior to top assembly.
- Tidy block edges and trim thread ends.



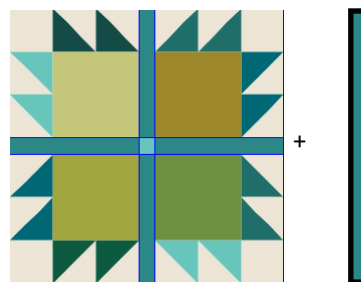
Classic Layout

Sashing Strips Round 2

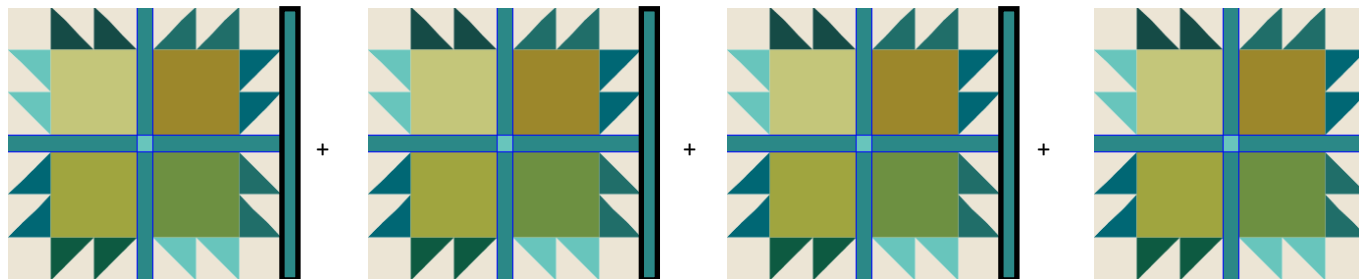
For 1" FINISHED sashing and cornerstones:

- Sashing strips Cut (24) 1 1/2" x 13 1/2"
- Corner Stones Cut (9) 1 1/2" x 1 1/2"

- Stitch a sashing strip on the right hand side of 9 of the 13 1/2" sashed blocks
- Join 3 sashed to one un-sashed block as illustrated.



Make 9.
13 1/2" x 14 1/2"



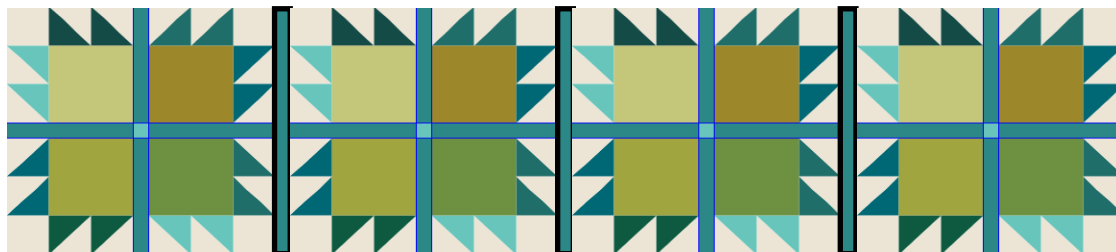
QUILTERSSELECT.COM

Pattern design and layout powered by



Quilt Along with QUILTERS SELECT®

- Make 4 to create Rows 1-4.



Make 4.
13 1/2" x 55 1/2"

- Stitch horizontal sashing:
 - Make 9: Sashing strip to cornerstone
 - Join 3 units + a remaining sashing strip as shown. Make 3.



+ Make 9
1 1/2" x 42 1/2"



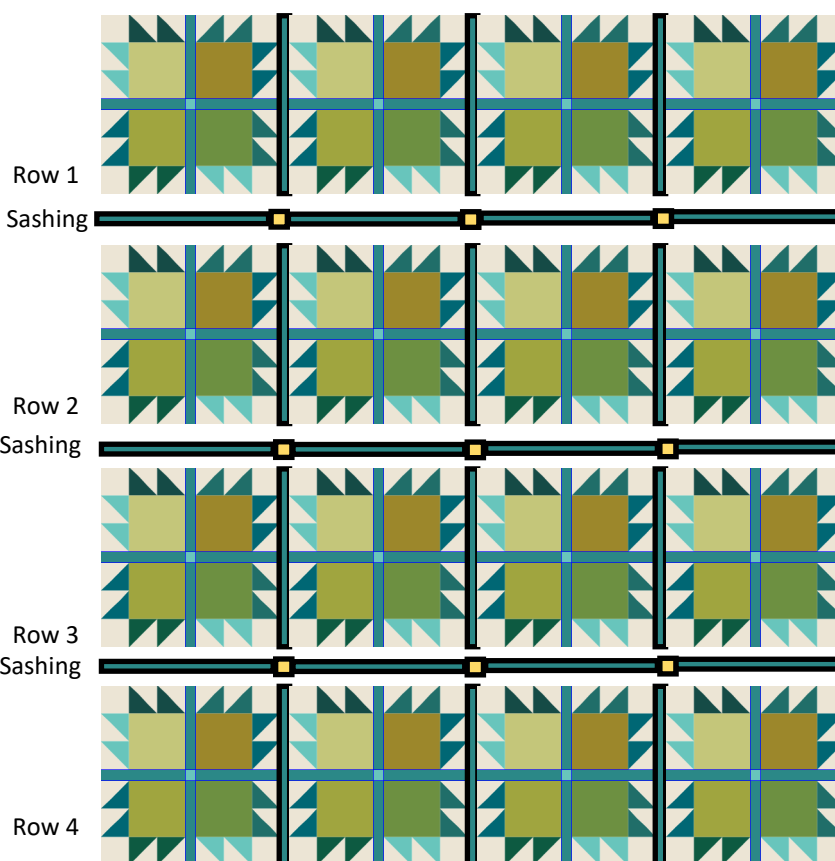
Make 3
1 1/2" x 55 1/2"

- Join Row 1 + horizontal sashing.
- Join Row 2 + horizontal sashing.
- Join Row 3 + horizontal sashing.
- Join Row 4 to sashed Row 3.

Borders: Width of the borders personal preference; for the length: measure the length of the quilt in 3-5 places. Take the average of the measurements for the length of the border strips.

- After attaching the lengthwise strips, measure the width in 3-5 places. Take the average of the measurements for the length of the top/bottom border strips. Stitch in place.

Quilt & bind as desired.



QUILTERSSELECT.COM

Pattern design and layout powered by

