

Quilt Along with QUILTERS SELECT®

Whirligig Garden with Quilters Select

Join the Quilters Select team and members of the Official Quilters Select Facebook Group for an Applique Wonder. If whirligigs grew in your garden and bloomed like flowers, they might look like this! Pieced blocks create the background for the four whimsical whirligig appliques.

We'll spend the first four weeks creating the background. Determine if you'd like the more literal interpretation of colors: Green terraced foreground, pale blue sky and orangey sunshine or is the sun in your magical garden purple?

Schedule: Materials will post by 11:00amEST (dates listed below)

- 9/1/25 Kickoff! Just the Facts & BIG Reveal
- 9/8/25 4-Patch Blocks
- 9/15/25 Log Cabin Block/Traditional
- 9/22/25 Log Cabin Block/Foundation Paper Pieced
- 9/29/25 Background Assembly
- 10/6/25 Heart Whirligig
- 10/13/25 Daisy Whirligig
- 10/20/25 Pinwheel Whirligig
- 10/27/25 Dresden Whirligig
- 11/3/25 Stems & Leaves
- 11/10/25 Attaching Appliques
- 11/17/25 Border Options
- 11/24/25 Catch up/Finish up



Whirligig Garden
28" x 56" (7" units)
or 20" x 40" (5" units)
excluding borders.
Designed by Ellen Schmidt

Resources will be housed on the Quilters Select Facebook Group page

Link: [\(20+\) The Official Quilters Select Group | Facebook](#))

- Coloring Pages
- Quilt mock-up
- .waf file for Design N Quilt users (download your free trial version here [RNK Software Club](#) or manually enter : [rnksoftwareclub.com](#))
- Weekly Video & Supplemental Handout.



Quilt Along with QUILTERS SELECT®

Techniques Covered:

- Foundation Piecing
- Turned Edge applique
- Faced Applique
- Raw edge/fused applique

Block details:

- *Finished* background block size: Option A: 7" or Option B: 5"
- Given the scrappy nature of the blocks, yardage is approximate. Yardage for both sizes is very similar. Any differences are noted in parenthesis.

Yardage Recommendation

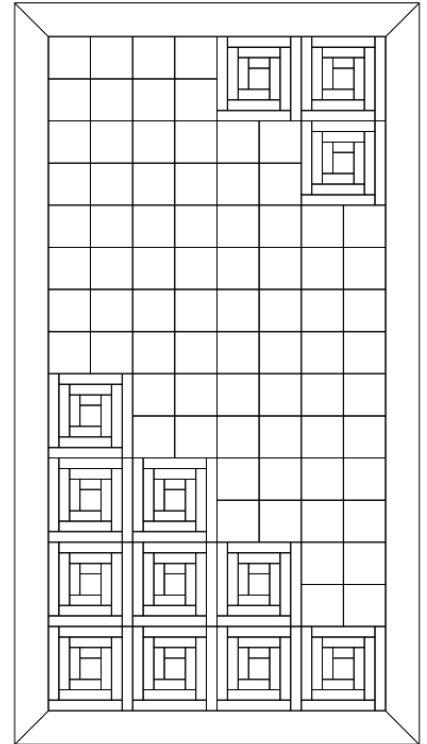
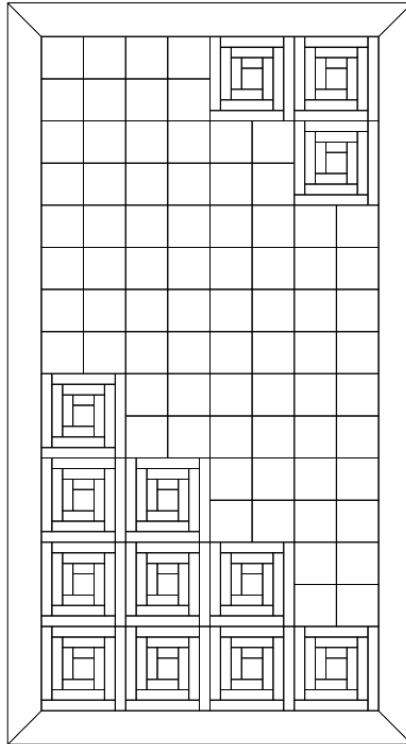
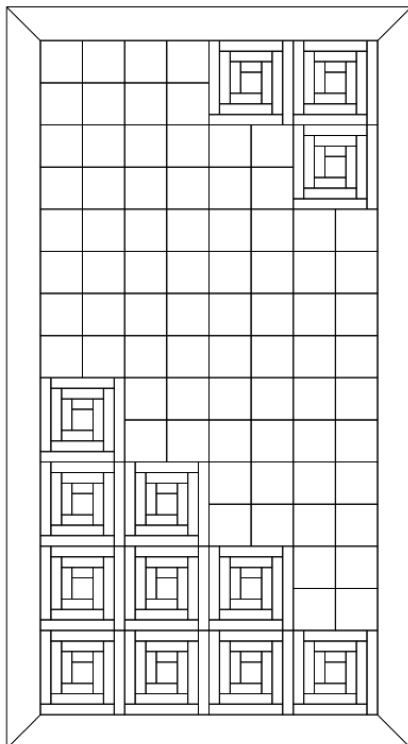
- *Background:*
 - 19 Four-Patch Blocks
 - 3/4 yd light blue
 - 3/4 yd med blue
 - 3 Log Cabin Blocks (sun)
 - 1/8 yd yellow
 - 1/8 yd light orange
 - 1/8 yd med orange
 - 1/8 yd red center
 - 10 Log Cabin Blocks (grass/ground)
 - 6-10 med-dk greens totaling 1/4 yd
 - 6-10 light green fabrics totaling 1/4 yd
 - 1/8 yd red center
- *Appliques:*
 - Heart Whirligig
 - 1/8 yd each of 3-4 polka dot prints
 - Daisy Whirligig
 - 1/8 yd striped print
 - 1/8 yd floral print
 - Pinwheel Whirligig
 - 1/4 yd striped print
 - 1/4 yd yellow
 - 1/8 yd green striped print
 - Dresden Whirligig
 - 1/2 yd pink polka dot print
 - 1/8 yd green striped print
- *Borders:* HINT: select border fabrics after the main body of the quilt is complete.
 - 5/8 yd narrow inner border
 - 1 yd outer border

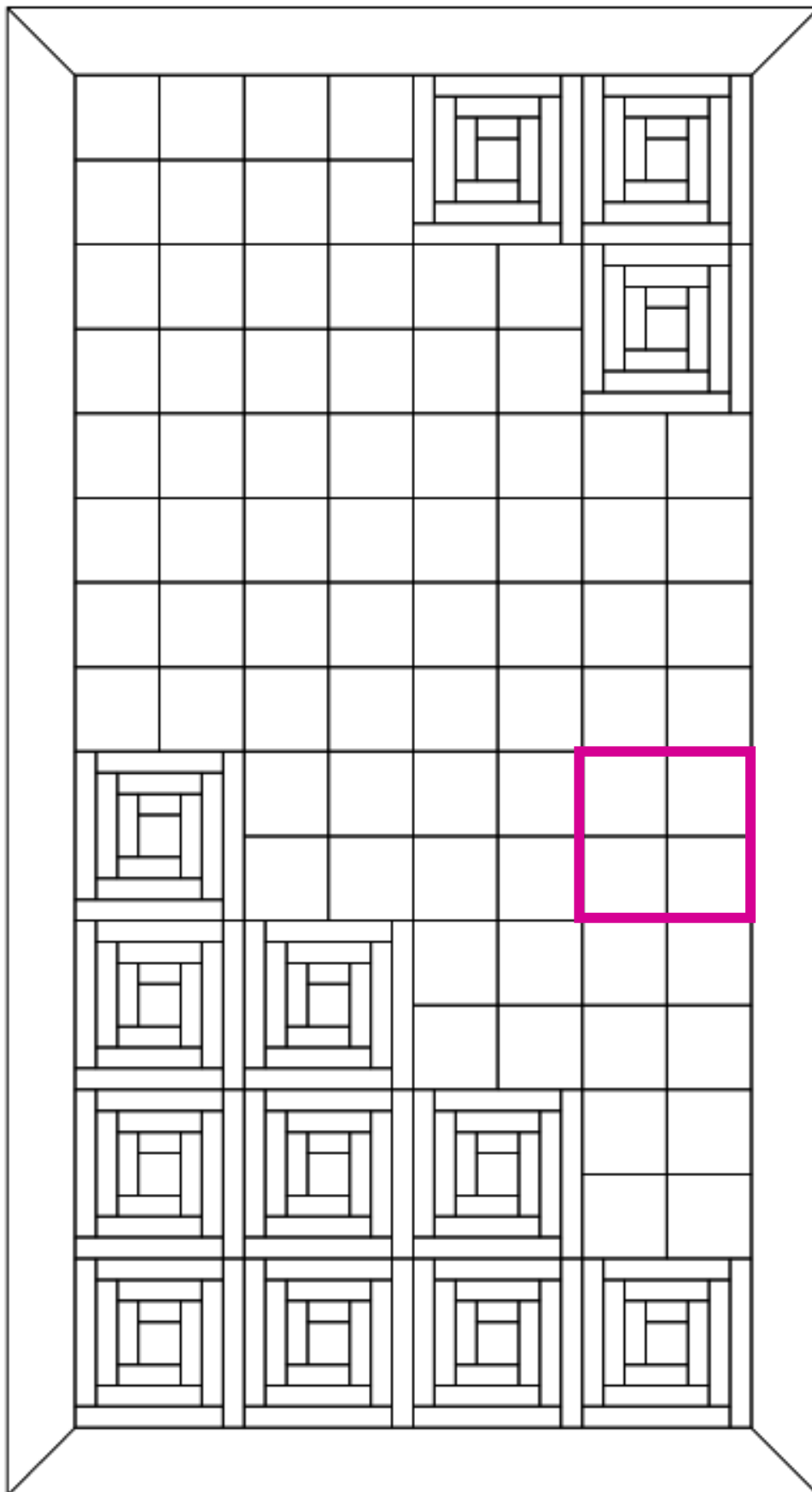


Recommended Rulers & Notions:

Note: Ruler sizes based on personal preference & listed in order of "importance".

- Quilters Select 30 Degree Dresden Ruler
- Quilters Select 6.5" x 6.5" Non-Slip Ruler
- Quilters Select 6" x 12" or 6" x 24" Non-Slip Ruler
- Quilters Select Rotary Cutter (45mm) and Mat (18" x 24" mat or larger)
- Quilters Select 60wt (for needle) & 80wt (bobbin) thread
- Quilters Select Self Erase Fabric Marker
- Quilters Select Glue Stick
- Point turner
- Pinking scissors
- Small trimming scissors
- Open toe applique foot





*Log Cabin Blocks
7" finished size*

*4-Patch Blocks
7" finished size*

*Log Cabin Blocks
7" finished size*

