

Caper

92" x 92"

Fabric Requirements

Light Grey - 5 5/8 yards

Grey - 2 1/4 yards

White - 2 1/4 yards

Binding - 3/4 yard

Backing - 3 yards of 108" backing fabric

Cutting Instructions

From the light grey fabric, cut:

- (98) 3" x 6 1/2" rectangles
- (98) 3 1/2" x 2 1/2" rectangles
- (98) 6 1/2" x 1" rectangles
- (98) 3 1/2" x 1" rectangles
- (196) 6 1/2" x 1 1/2" rectangles
- (98) 4 1/2" x 2 1/2" rectangles
- (98) 4 1/2" x 1" rectangles

From the dark grey fabric, cut:

- (98) 4" x 3 1/2" rectangles
- (98) 4 1/2" x 1" rectangles

From the white fabric, cut:

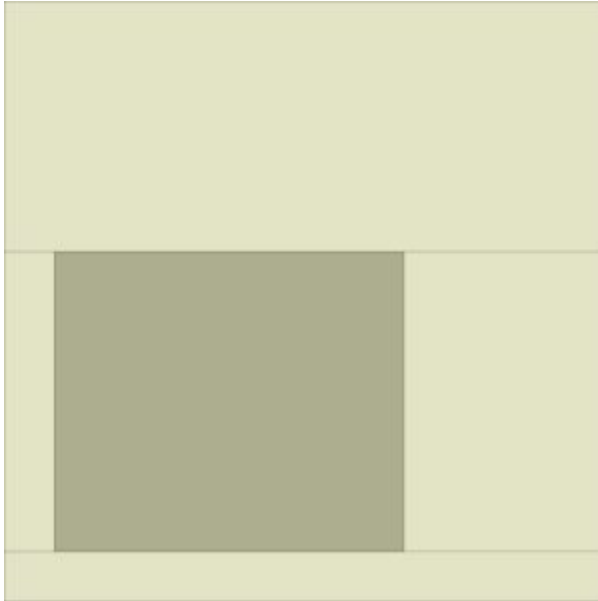
- () 1" x 1" squares
- () 1" x 6 1/2" rectangles
- (2) 1 1/2" x 91" borders made from width of fabric strips
- (2) 1 1/2" x 93" borders made from width of fabric strips

From the binding fabric, cut:

- (10) 2 1/2" x width of fabric strips

Instructions

Block A



Sew the 3 1/2" x 2 1/2" light grey rectangle to the 4" x 3 1/2" grey rectangle using the block diagram below as a guide.

Sew the 3 1/2" x 1" light grey rectangle to other side of the 4" x 3 1/2" grey rectangle.

Sew the 3" x 6 1/2" light grey rectangle to the top of the block unit.

Sew the 6 1/2" x 1" light grey rectangle to the bottom of the block unit to complete Block A.

Unfinished Block A measures 6 1/2" x 6 1/2".

Make 98.

Block B

Sew the 4 1/2" x 2 1/2" light grey rectangle to the 4 1/2" x 4" grey rectangle using the block diagram below as a guide.

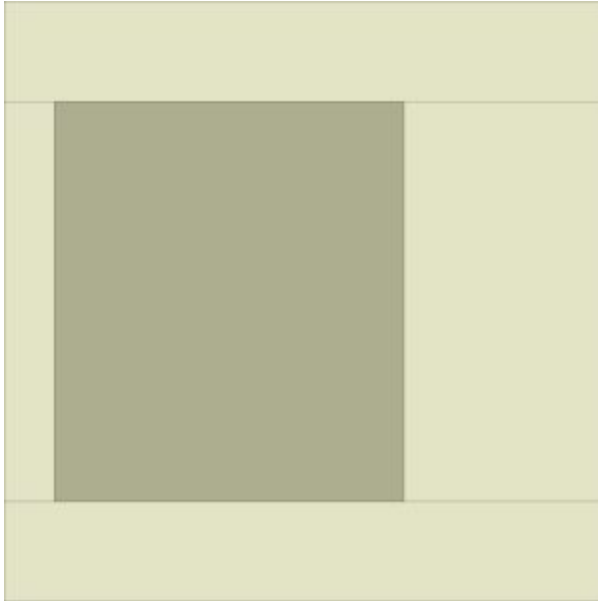
Sew the 4 1/2" x 1" light grey rectangle to other side of the 4 1/2" x 4" grey rectangle.

Sew the 6 1/2" x 1 1/2" light grey rectangle to the top of the block unit.

Sew the 6 1/2" x 1 1/2" light grey rectangle to the bottom of the block unit to complete Block B.

Unfinished Block B measures 6 1/2" x 6 1/2".

Make 98.



Sashing

Sew a 6 1/2" x 1" white rectangle between the blocks in the row, alternating Block A and Block B. Use the quilt assembly diagram below as a guide. Continue to make all the rows.

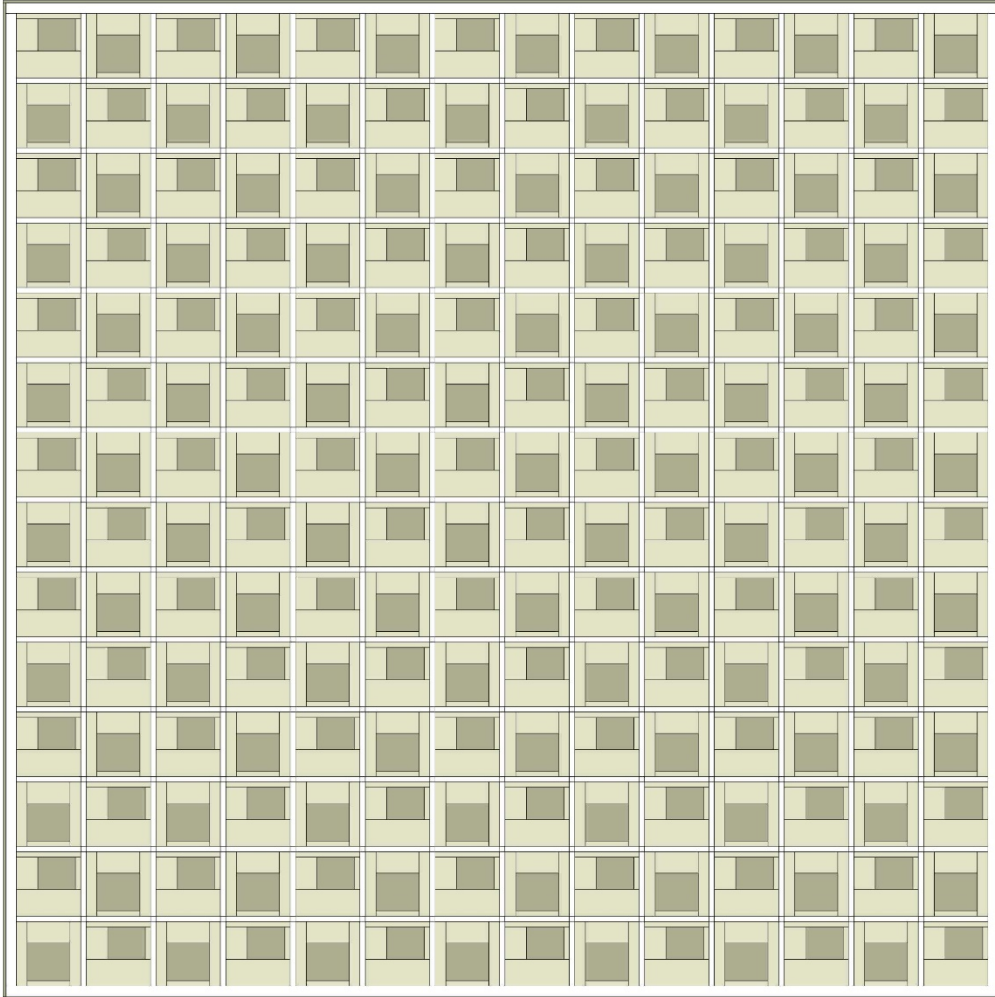
Sew a 6 1/2" x 1" white rectangle to a 1" x 1" white square. Continue to make the sashing row. Use the quilt assembly diagram below as a guide. Continue to make all the sashing rows.

Quilt Assembly

Using the diagram below as a guide, sew the block and sashing rows together alternately.

Sew the 1 1/2" x 91" borders to each side of the quilt center.

Sew the 1 1/2" x 93" borders to the top and bottom of the quilt center.



Layer, quilt as desired and bind.