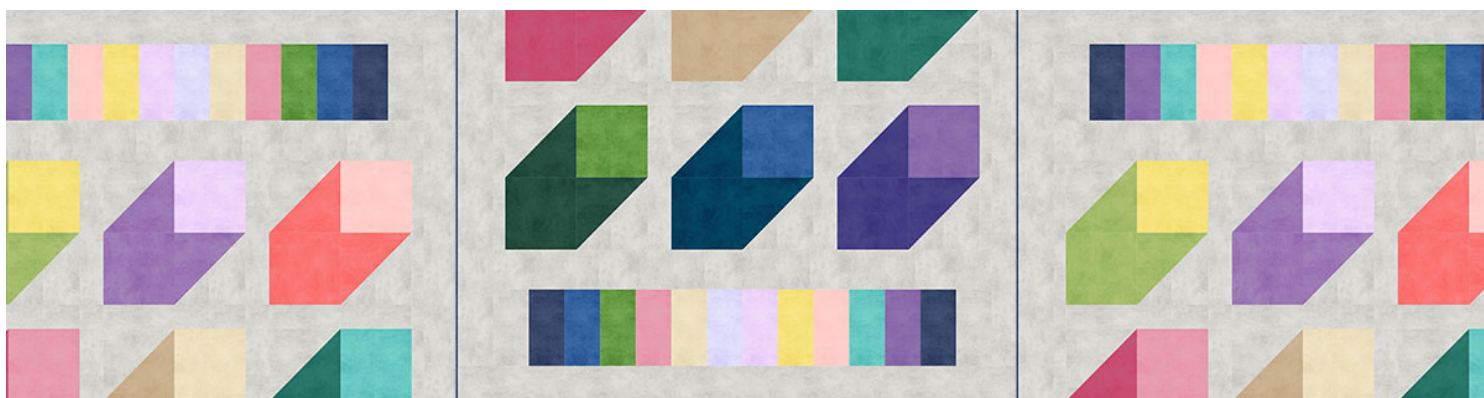




American Quilter's Society

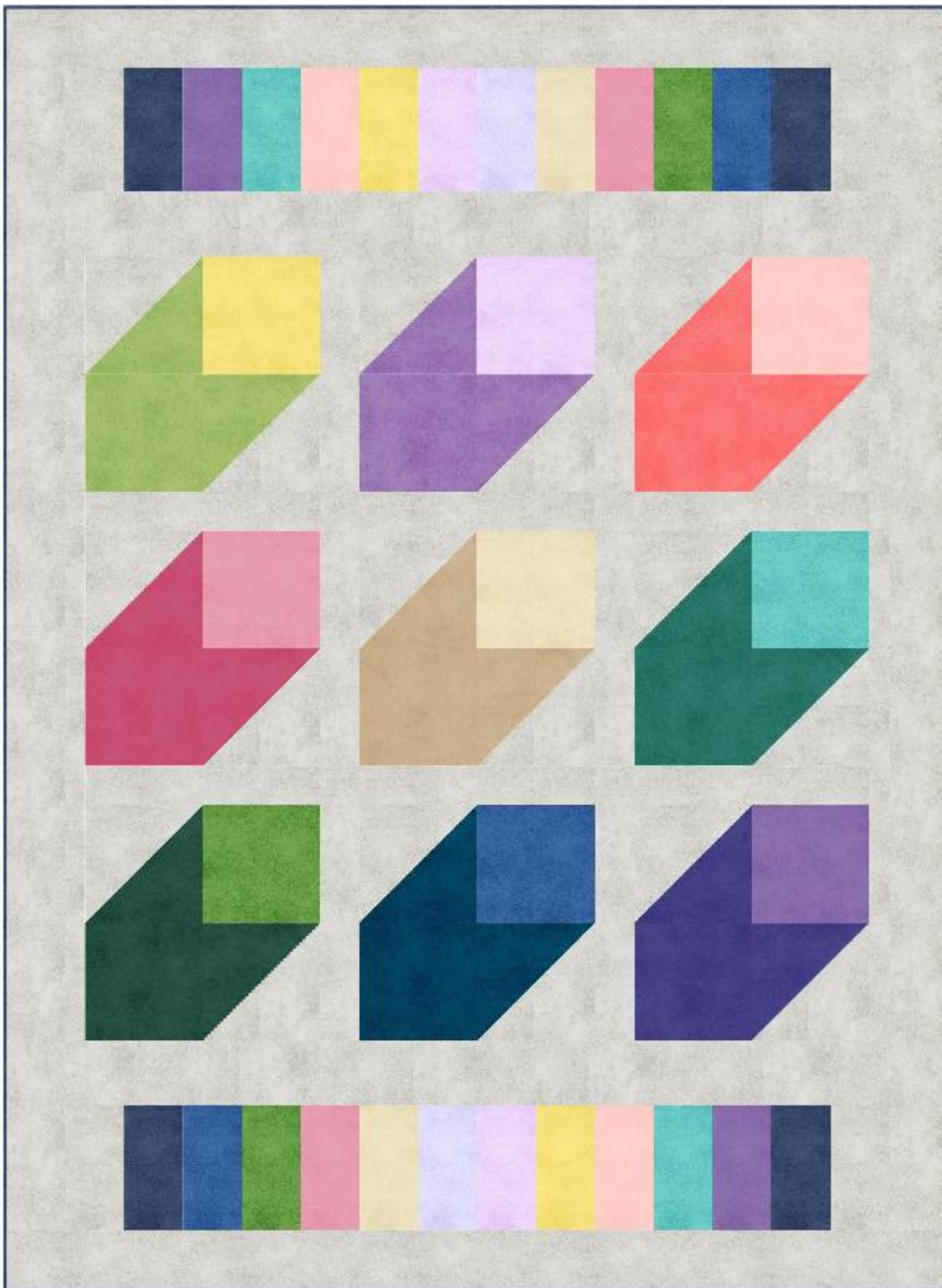
Casting Shade Quilt



Casting Shade Quilt

By Emily Cross

72" x 98"



Fabric Requirements

(1) 10" x 10" precut squares
 26 dark value squares
 15 light value squares
 Silver Background — 3 1/4 yards
 Binding — 2/3 yards

Cutting Instructions

The light and dark value squares are both the light square and the "shadow" so decide on your color pairs before cutting.

For the light squares, cut:
 (9) 9 1/2" x 9 1/2" squares

For the shadows, cut:

(9) 10" x 10" squares

(9) 9 1/2" x 9 1/2" squares

From the remaining 10" precut squares, cut:

(28) 5" x 10" rectangles (optional: make 4 the same color as the background as pictured)

From the background fabric, cut:

(3) 10" x WOF strips, subcut into:

- (9) 10" x 10" squares
- (4) 3 1/2" x 3 1/2" squares

(6) 3 1/2" x WOF strips, subcut into:

- (12) 3 1/2" x 18 1/2" rectangles

(3) 1 1/2" x WOF strips sewn together and subcut into:

- (2) 1 1/2" x 60 1/2" strips

(4) 5 1/2" x WOF strips sewn together and subcut into:

- (2) 5 1/2" x 63 1/2" strips

(9) 5" x WOF strips sewn together and subcut into:

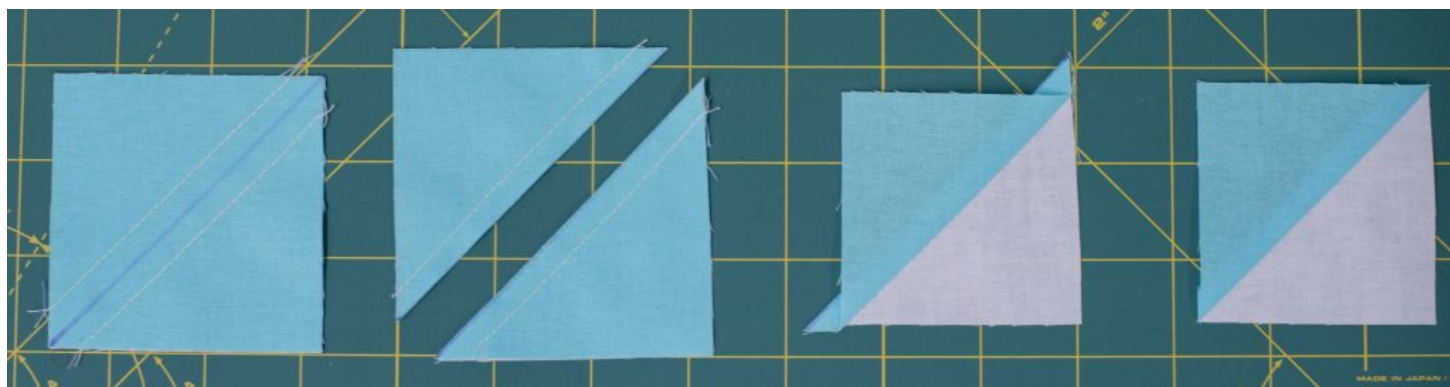
- (2) 5" x 72 1/2" strips
- (2) 5" x 89 1/2" strips

From the binding fabric, cut:

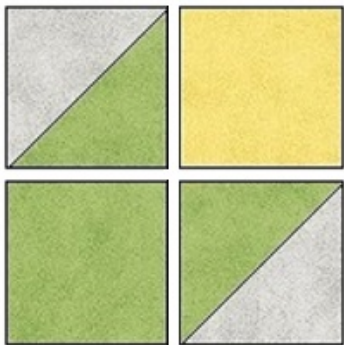
(9) 2 1/2" x WOF strips sewn together

Block Assembly:

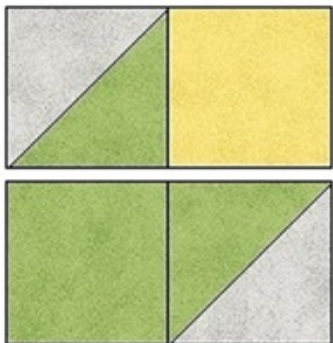
Mark the wrong side of the background 10" squares in half once diagonally. Lay a marked background square over a 10" square of shadow fabric and sew a quarter inch to each side of the marked line. Cut apart on the marked line and press towards the shadow fabric. Trim to 9 1/2" square. Make 9 pairs of Half Square Triangles, 18 total.



If using a Peaceful Shadow Play 10" precut set, use the diagram below for color planning/placement.



Lay out the blocks using the Half Square Triangle pairs, a light square 9 1/2" and a shadow 9 1/2" square as shown above.



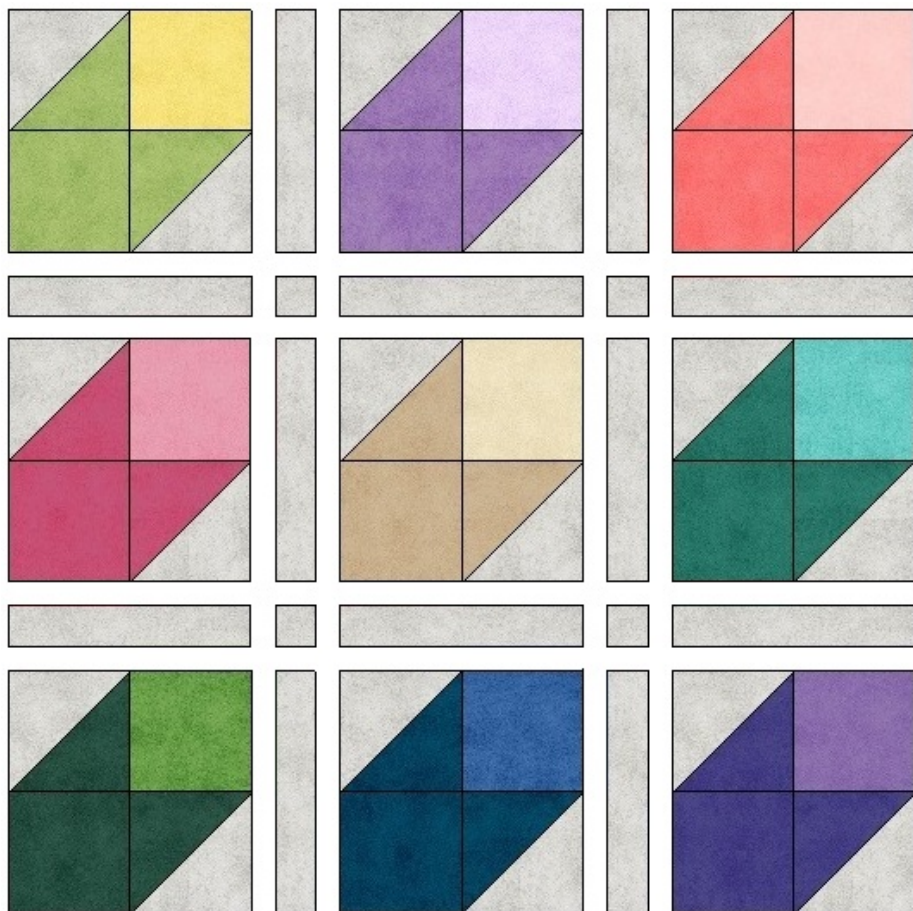
Sew the units together in pairs and then sew the pairs together. Block measures 18 1/2" unfinished. Make 9.

Pieced Border Assembly

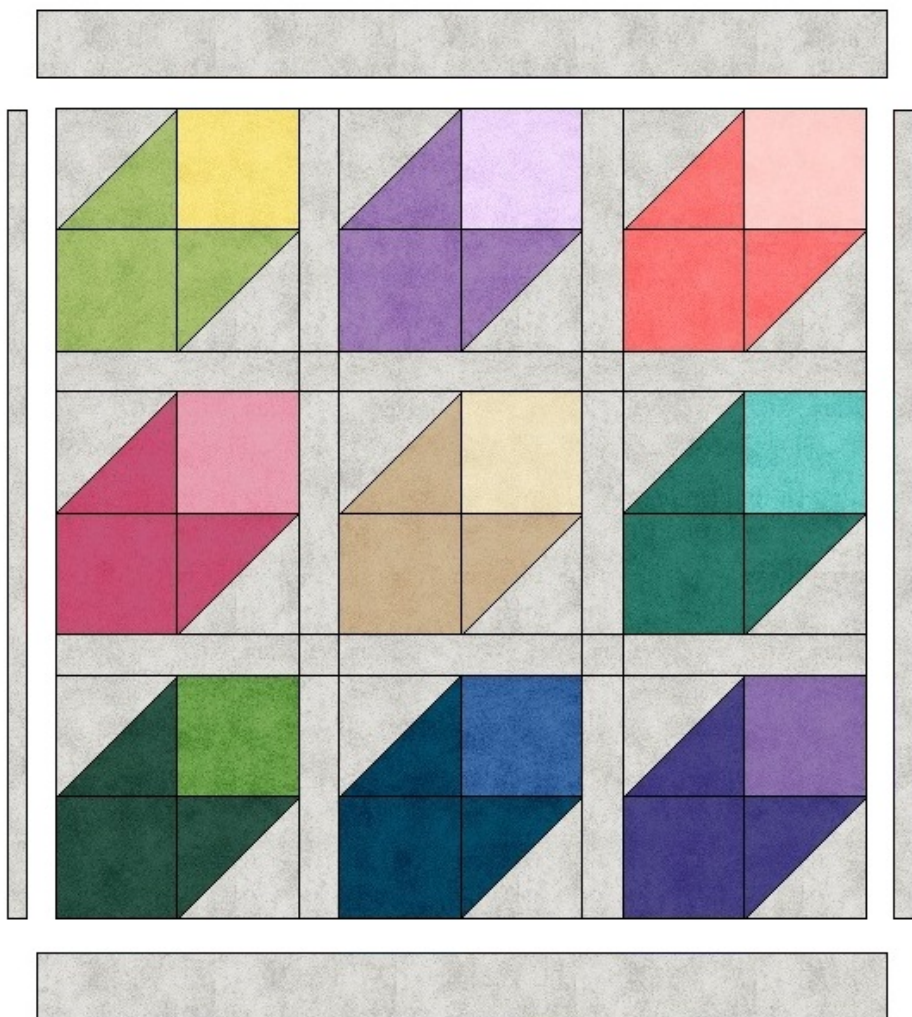
Following the color chart below as a guide, arrange the 5" x 10" rectangles into two sets of 14. Sew each set together to make two borders. Border measures 10" x 63 1/2" unfinished.

Gray
Navy
Purple
Aqua
Peach
Yellow
Lavender
Lilac
Cream
Rose Pink
Moss Green
Royal Blue
Navy
Gray

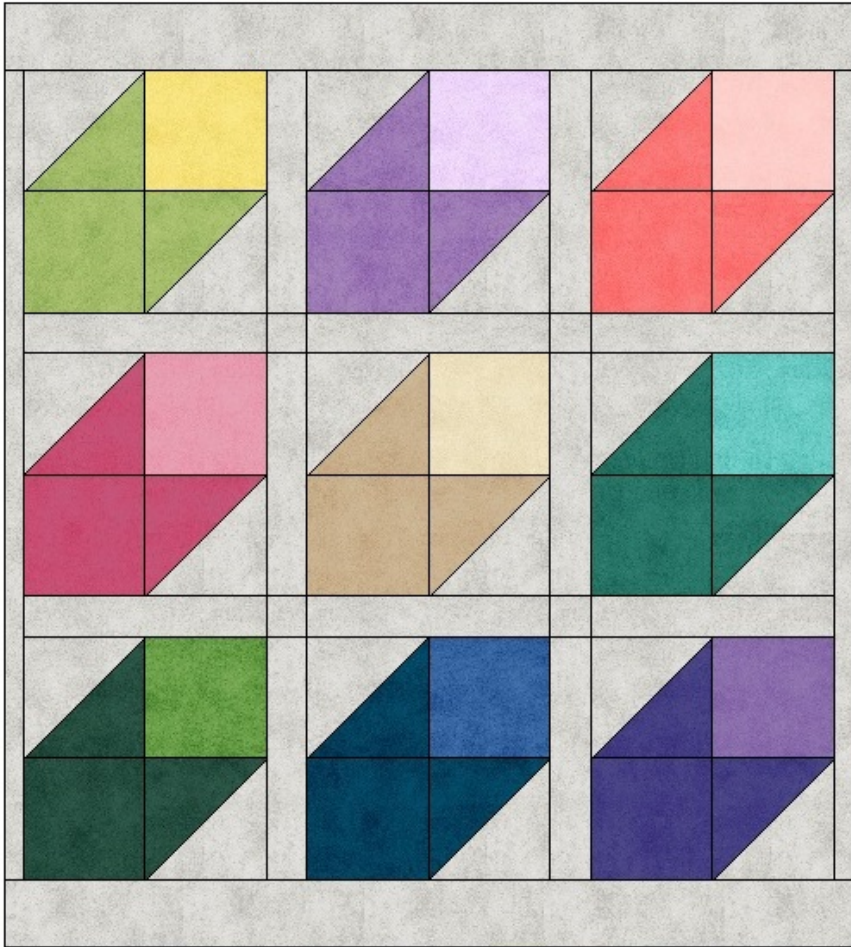
Quilt Assembly



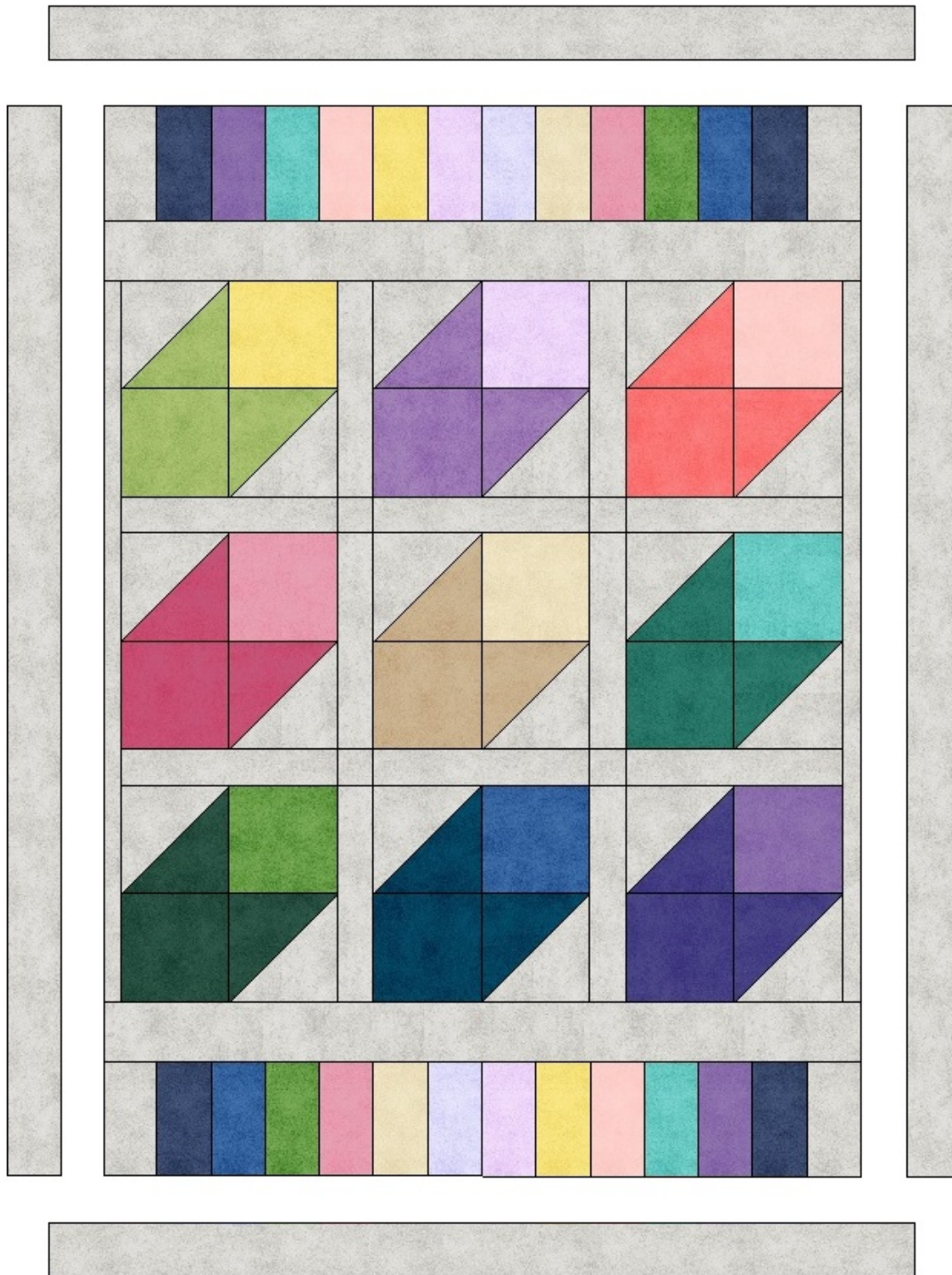
Lay out the blocks, 3 1/2" x 18 1/2" sashing strips, and the 3 1/2" sashing squares. Arrange the blocks as desired. Assemble in rows. Quilt center measures 60 1/2" x 60 1/2" unfinished.



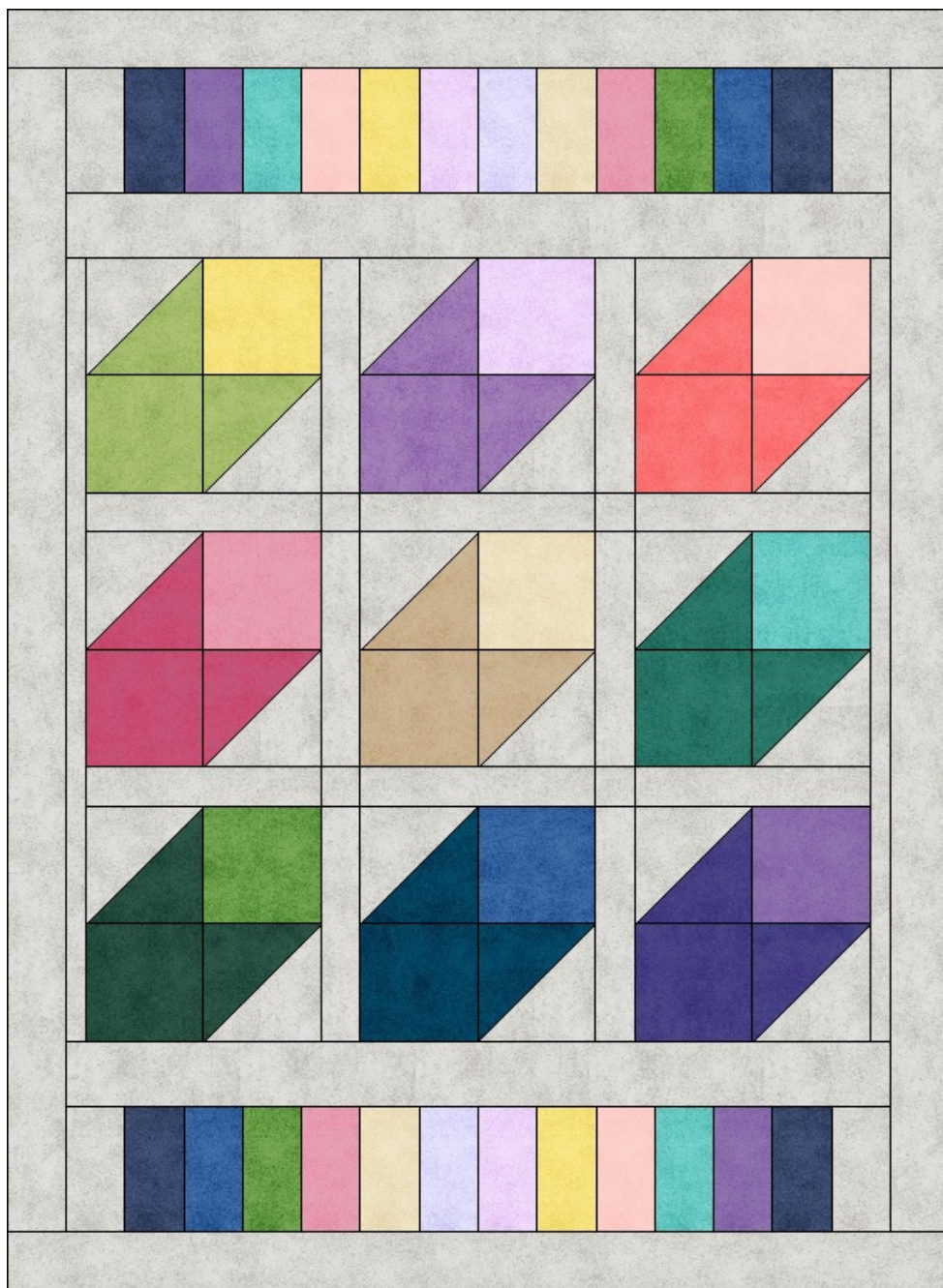
Sew the 1 1/2" x 60 1/2" borders to the left and right side of the quilt and press. Sew the 5 1/2" x 63 1/2" borders to the top and bottom of the quilt and press.



Next, sew the pieced borders to the top and bottom of the quilt and press.



Sew the 5" x 89 1/2" borders to the left and right side of the quilt and press. Lastly, sew the 5" x 72 1/2" borders to the top and bottom of the quilt to complete the quilt top.



Quilt as desired and bind using preferred method.