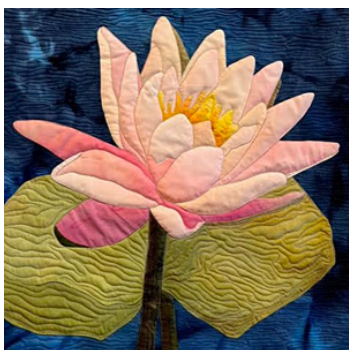


September 13-16, 2023



Beginning Hand Appliqué: Waterlily Quilt

Sandra Mollon

Beginner, Intermediate

Wednesday, 8:30 a.m. - 4:00 p.m.

Room: River Overlook EF

#43105w - Appliqué

In this beginning level hand appliqué class, students will learn to do the easy method of prepared appliqué, with an introduction to adding media for shading. Registration for this class includes show admission for Wednesday.

sandramollonquilts.com

Member: \$100

Retail: \$125

(Plus Kit Fee)

Supplies:

A kit is required and includes: pattern, (3) fat eighths of hand dyed cotton fabrics in peach or pink tones, (1) fat eighth of hand dyed green fabric, and a small square of yellow-orange hand dyed cotton.

Kit Fee: \$35 (payable in class, cash preferred)

Please bring the following items to class:

- (1) fat quarter (18" x 22") - blue color background fabric that looks like water
- (1) 12" square - light color batik fabric (in off white to light beige)
- Fabric Scissors
- Paper Scissors
- Notebook, Pen, and Pencil
- Paper Bag for Trash
- (1) yd. - freezer paper
- Stiletto
- 25" square - piece of flannel to iron on in class
- Roxanne's Glue Baste-It

Classroom Sponsors: Thread by WonderFil® • Irons by Panasonic • Ironing Spray by Faultless® Brands • Rotary cutters, mats, and 6" x 24" rulers by AccuQuilt®